

If the current window does not have the active Windows focus*, keys used to control a program do not function as expected. EEGer does not display the cursor on the EEG training screen in order to allow for more efficient display of the real-time EEG and that can make it difficult to know if the program has the active focus. This is true *especially when using the Dual Monitor configuration* where the cursor can move to the second screen. If EEGer is not responding to your key presses, you may need to reset the focus to regain control. Windows uses the “focus follows click” method to change the active display with a click of the mouse, but you must be able to see where the mouse is to know what will become active.

EEGer 4.2.0R or later includes a special key combination to show the mouse location. By default, the cursor appears as a large, thin plus sign (+) which can be difficult to see. To change the cursor to something more noticeable, edit the Precision Select mouse pointer image in the Mouse Control Panel.

- **To see the cursor in EEGer, press and hold CTRL+SHIFT**
- **To set the focus to EEGer, move the cursor to the EEG display and click the LEFT mouse button.**

INSTRUCTIONS FOR CHANGING THE MOUSE POINTER:

1. Click **Start** and select **Control Panel**.
2. Double-click the **Mouse** control panel. (Hint: Switch from Category to Classic view to make it easier to find).
3. Click the **Pointers** tab.
4. Click to highlight **Precision Select**.
5. Click **Browse**. Select a different image file by clicking to highlight a filename, such as *dinosaur ani* (the .ani extension might not be displayed) and click **Open**. (See the example in Figure 2.)
6. To save the change, click **OK**.

Figure 1. Example of cursor mode selection.

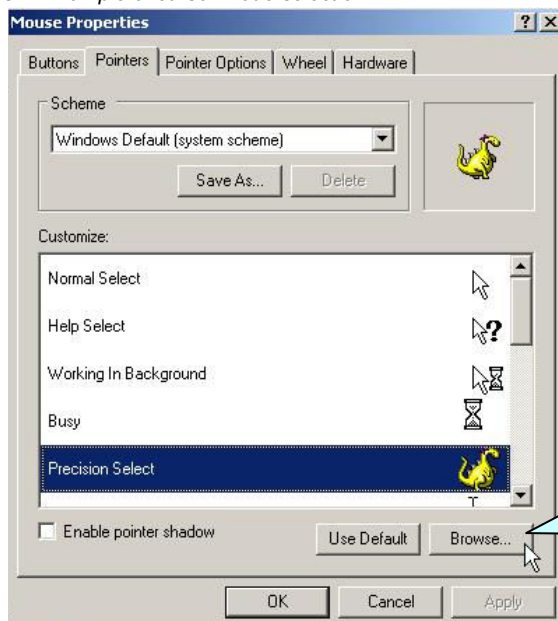
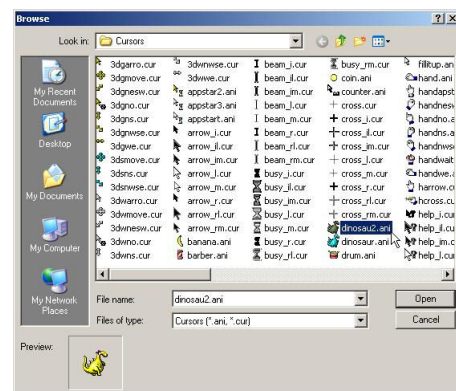


Figure 2. Example of cursor image selection.



Click Browse to select a different cursor image file, such as *Dinosaur.ani*.

* More information about Window focus is available on the Internet (e.g., www.wikipedia.com) or in Windows computer tutorials.