



INSTALLATION INSTRUCTIONS

esiPro 4.3/2.2 Amplifiers

STEP 1: Before you connect your esiPro amplifier to a USB port for the first time, please install the esiPro Demo software provided on the small CD.

STEP 2: When you attach the esiPro to the computer, Windows® needs to install the software drivers for the device. Please follow these directions when connecting your amplifier.

1. **Attach the esiPro amplifier** to the left or upper USB port on the Therapist computer. For computers set up by EEG Spectrum Systems, the port is labeled dark green.
2. **When the *Found New Hardware Wizard* appears:**
 - a. If prompted to connect to Windows to search for a driver, click **No, not this time**, then click **Next**.
 - b. Click **Next** and follow prompts to *Install the software automatically* for “A400usb.inf for Renumeration” or “A200usb.inf for Renumeration” (Figure 1). Click **Continue Anyway** on the logo testing message.
 - c. Continue with the installation. Once you click **Finish**, the wizard begins again. Complete steps a & b above to automatically install the software for “TDS Alpha400 EEG Amplifier” or “TDSAlpha200 EEG Amplifier” (Figure 2).
 - d. When you click **Finish** again, the installation is complete and your esiPro amplifier is ready to use in EEGer.

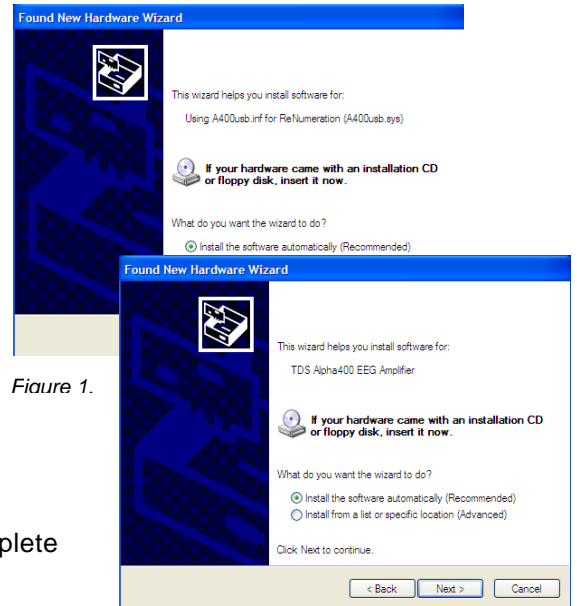


Figure 1.

Figure 2.

3. **To configure EEGer to use the esiPro amplifier:**
 - a. Open the EEGer program. From the **Preferences** menu, select **Configuration**.
 - b. On the **Devices** tab, for “*Source of EEG peripheral data*” click the box and select **esiPro** from the list of amplifiers (Figure 3).
 - c. Click the **Store Settings** button and close the window.

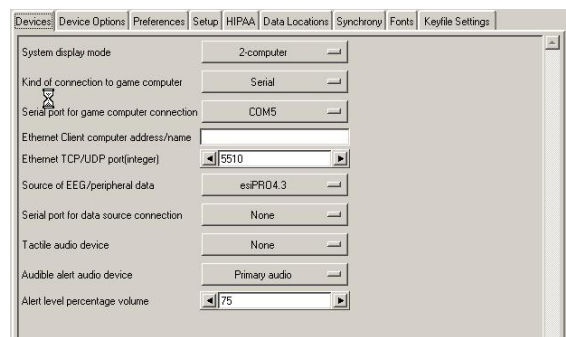


Figure 3.